

# Configuration

| Head Option                  | Kyocera 3.5PL UV head   |                          |                          |
|------------------------------|---|--------------------------|--------------------------|
| Print Speed<br>(2 rows head) | Production Mode   | High Quality             | Ultra Quality            |
|                              | 68 sqm/ hr<br>732 sqft/ h   | 43 sqm/ h<br>463 sqft/ h | 33 sqm/ h<br>355 sqft/ h |
| Head Option                  | Ricoh GEN5-7PL UV head  |                          |                          |
| Print Speed<br>(2 rows head) | Production Mode   | High Quality             | Ultra Quality            |
|                              | 39 sqm/ h<br>420 sqft/ h  | 26 sqm/ h<br>280 sqft/ h | 19 sqm/ h<br>205sqft/ h  |
| Head Quantity                | 2-8   |                          |                          |
| Color Option                 | Y M C K LC LM + W   |                          |                          |
| Printing Mode                | Unidirectional/ Bi-directional  |                          |                          |
| Media Thickness              | 1-50mm  |                          |                          |
| Rip Software                 | ONYX/ Caldera/ PhtotoPrint  |                          |                          |
| File Format                  | EPS, JPEG, PDF, TIFF, Postscript  |                          |                          |
| Color Mangerment             | ICC Based Color, Curves Adjust, Density Adjust  |                          |                          |
| Machine Connect              | USB3.0  |                          |                          |
| Ink Type                     | UV cure ink   |                          |                          |
| Medias                       | Glass, Acrylic, Wood, PVC, Metal Panels, Ceramic Tiles, KT board WPC, MDF, Ceiling Film, Vinyl, Advertising Banner, PET, Wall paper and so on |                          |                          |
| Material Fix                 | Table Vacuum  |                          |                          |
| Power Supply                 | 50/ 60HZ 220V (10%)> 30A  |                          |                          |
| Movement                     | 220V AC servo driver and servo motor  |                          |                          |
| Operation ENV                | Temp 20℃ to 28℃ Humidity 40% to 60%   |                          |                          |

NOTICE: The above technical parameters are subject to change without prior notice.

SHANGHAI DOCAN TECHNOLOGIES CO., LTD  
No. 777, Shenglong Road, Jiuting Town  
SONGJIANG, SHANGHAI-CHINA 201615  
Tel: +86-021-33522193; Fax: +86-021-33522690\*8888 | Email: sales@uvflatbedprinter.com.cn



## FR3210T UV Hybrid Printer

High Speed & High Quality Solution



China · Shanghai  
since 2005



## Function & Advantage

- With the most advanced printhead, production print mode speed reaches 68 sqm/ h

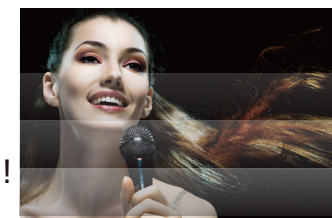


- Excellent ICC output control makes one same image job printed by same machine at different time, at same time by different machines, or at different time by different machines appear perfectly the same from a view of 60cm distance



Advanced Inkjet Control Technology keeps the printed image in high quality

- Amazing beautiful printing! No Banding!



Normal Printing



Kyocera Printing

ONYX/ Caldera RIP software, automatic color adjust and brightness adjust

- Print quality is more stable and higher

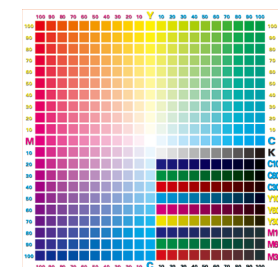


Before RIP



After RIP

- The accurate ICC-making program contains more than 1000 color swatches. Therefore DOCAN machine delivers more colorful and more natural printing

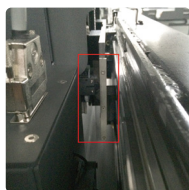


3.2m \* 2.5m & 3.2m Roller

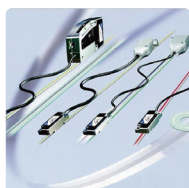
DOCAN FR 3210T UV flatbed printer adopts the most advanced Kyocera printhead that has the 3.5PL ink droplet size and 2656 nozzles. Full-steel made, the Kyocera has a longer life time. The head has double-row inlet ink tubes to ensure even ink flowing pressure. The unique anti-blocking technology and the automatic bubble cleaning function highly reduce the nozzle blocking and nozzle missing during the long time printing



Special height detecting system adopts raster and encoder system to detect media thickness more exactly



X axis and Y axis adopts imported high-quality metal raster, which eliminates the mechanical tolerance, and enables the carriage movement precision to 0.01mm



Excellent LED UV curing system supports the heat-labile medias. Advanced plasma Anti-static device, the machine perfectly avoids the ink spray that otherwise would be caused by the static from the media

